

CERTIFICATE OF LOCATION OF GOVERNMENT CORNER

EAST QUARTER Corner of Section 11, Township 105 N., Range 39 W., 5th. P.M.

STATE OF MINNESOTA, County of MURRAY

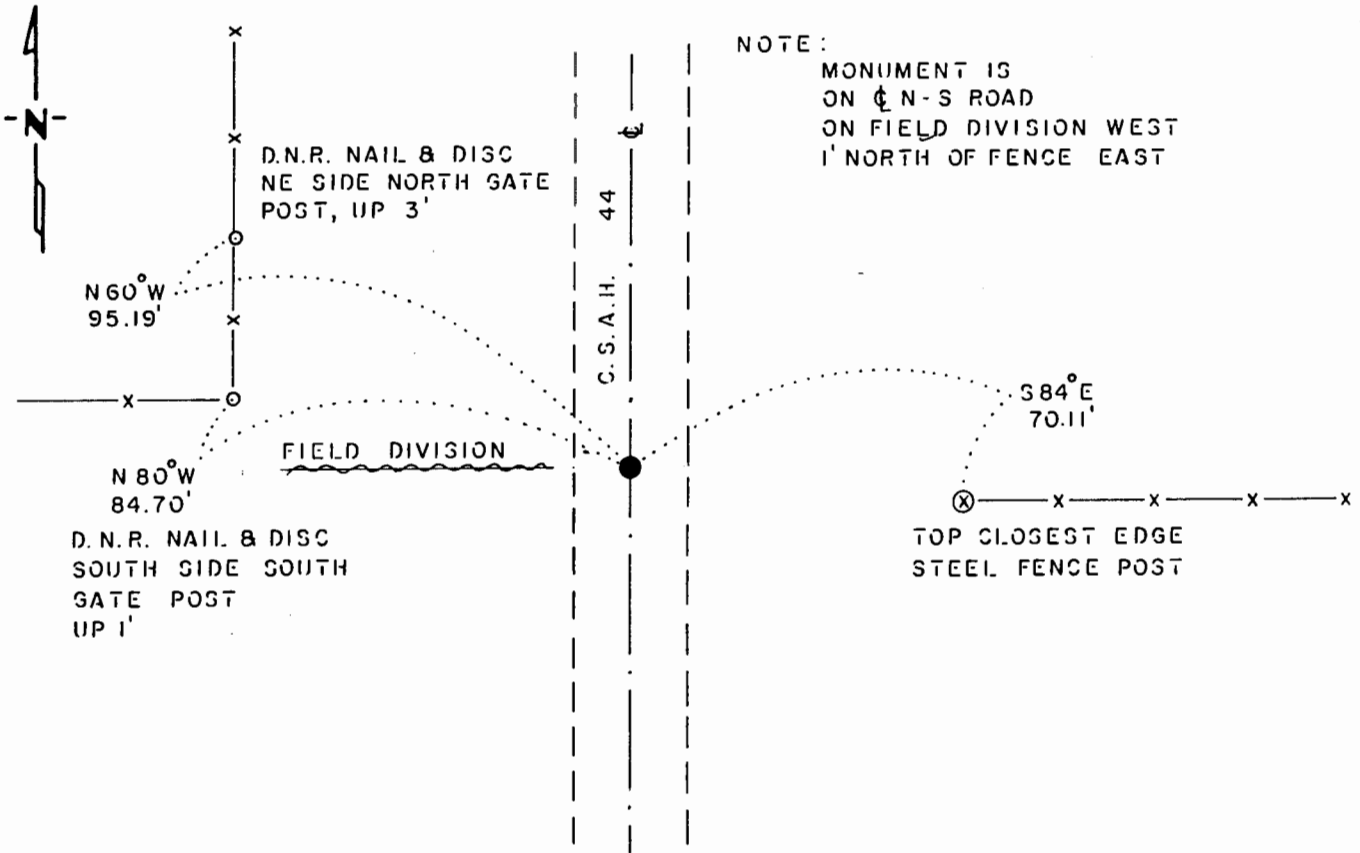
At the corner location shown on the sketch:

On 6-26-85 found a 10"x13"x8" STONE, DOWN 18"
DATE

left monument as found, lowered monument, removed monument (explain)

On 6-26-85 placed a 1 1/4"x 1 1/4"x 20" PERFORATED STEEL TUBE WITH
DATE
ALUMINUM CAP STAMPED "D.N.R. SURVEY MARKER", DOWN 0.4' OVER STONE

SKETCH OF REFERENCE TIES



BEARINGS OBSERVED WITH COMPASS

Statement of evidence relative to this corner location is on back of page.

J. B. M. 12-12-85
G-158

I hereby certify that this document and the data contained herein was prepared by me or under my direct supervision.

Bruce W. Shepard 12/20/85
SIGNATURE DATE

Registration No. 17003

- Land Surveyor, Professional Engineer
 County Surveyor, County Engineer

OFFICE OF THE COUNTY RECORDER

County of _____

I hereby certify that this document was filed in the Co. Recorders office at _____ .M. on the _____ day of _____ A.D., 19 _____

County Recorder _____

By _____, Deputy

DOCUMENT NO. _____

East Quarter Corner Section 11, Township 105 North, Range 39 West

This corner was originally established by the U. S. General Land Office survey in 1861. The government notes show:
set post, drove charred stake, made mound with
trench and pits as per instructions

In June 1985, the DNR Bureau of Engineering contacted the following for corner information:
Murray County Offices of the Recorder and Highway Engineer

The following information was obtained from the County Recorder's Office:

Surveyor's Record Book A on Page 185 contains a survey done in 1902, by J. W. Woolstencraft. Survey shows the following at corner:
government mound and stake and stone

The following information was obtained from the Highway Engineer's Office:

A page in a Tie Book shows that in 1961 a concrete monument was set over a stone at corner. The following ties were taken:
tack in corner fence post, east, 29.2 feet
southeast corner concrete post, northwest, 36.2 feet

On June 26, 1985, the DNR Bureau of Engineering hired a backhoe operated by Roger Gerber of Fulda to dig for evidence of this corner. A 12 foot north-south by 10 foot east-west by 18 inch deep hole was dug the center being on the center line of a north-south road in line with a fence east. A 13 inch by 10 inch by 8 inch stone was found down 18 inches at natural ground. Searched for but did not find a concrete monument. The stone was lowered to 28 inches and railroad spikes were set on its east and west sides. Also, searched for but did not find the record ties.

Accept the stone as the location of the corner.

Traverse information is available from the DNR Bureau of Engineering.

rec5/missu4